



**MINISTRY OF ROAD AND TRANSPORT DEVELOPMENT OF  
MONGOLIA**

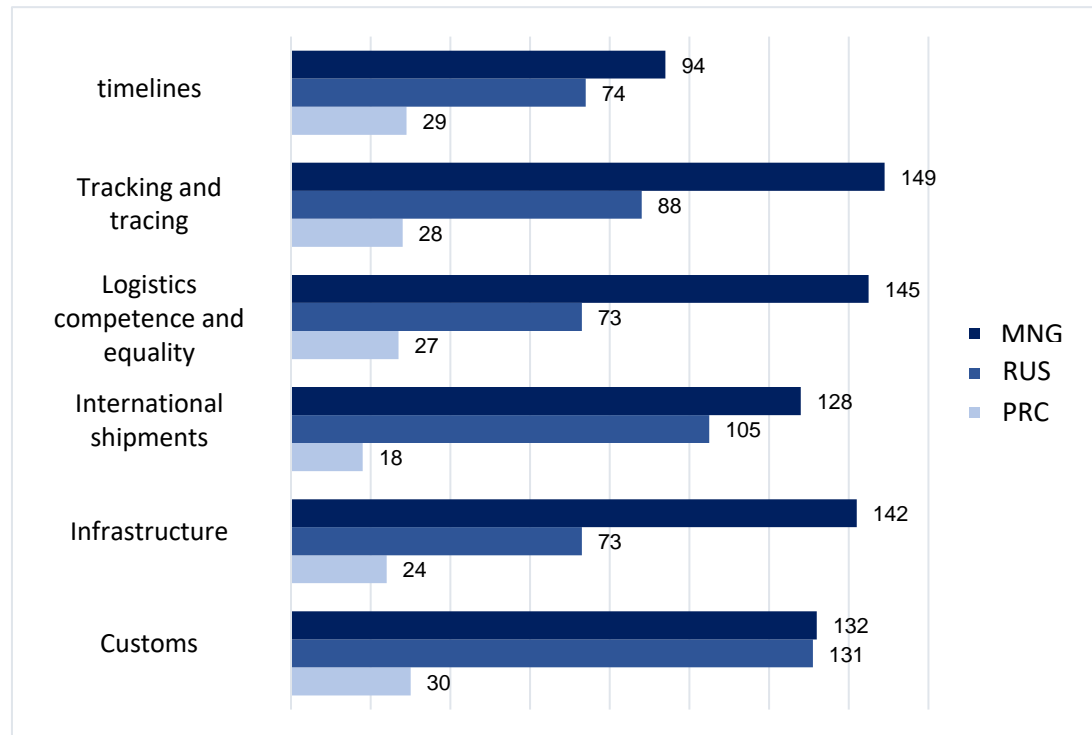
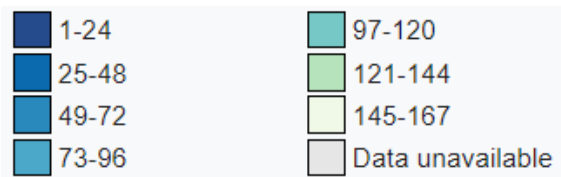
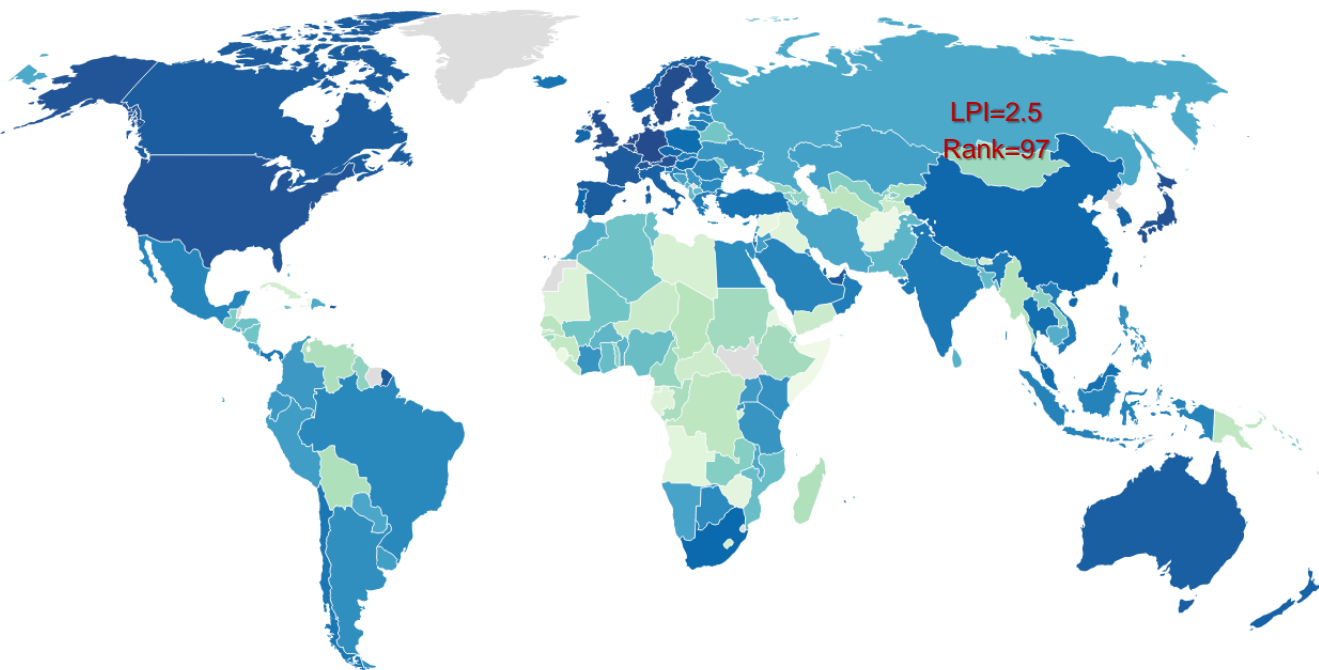


**“DRIVING GUIDE DEVELOPMENT – ROAD TRANSPORT”**

# THE CURRENT STATE OF LOGISTICS

## Logistics Performance Index

- According to the LPI or Logistics Performance Index, Mongolia is ranked 97th out of 160 countries around the world.



*Mongolia has advanced compared to 2018, but its logistics performance remains in the (poor logistics performers) category.*



## OBJECTIVE

Regional economic integration will be fully integrated through an integrated infrastructure network and will provide a basic environment for rapid economic growth.

## MEASURES

It aims to establish 8 international logistics centers, 83 agricultural logistics centers and 8 freight terminals to improve border capacity.



# TRANSPORT AGREEMENTS AND CONVENTIONS

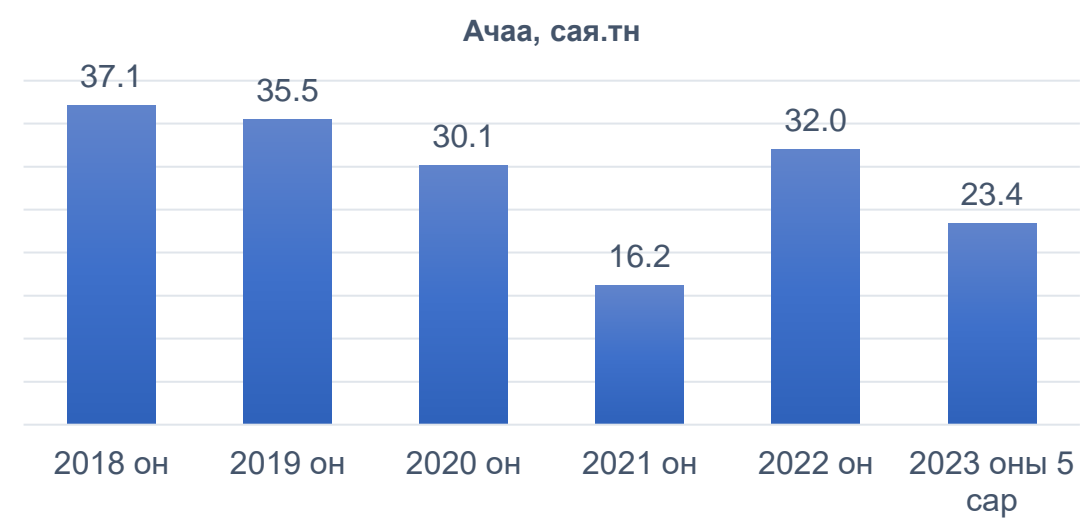
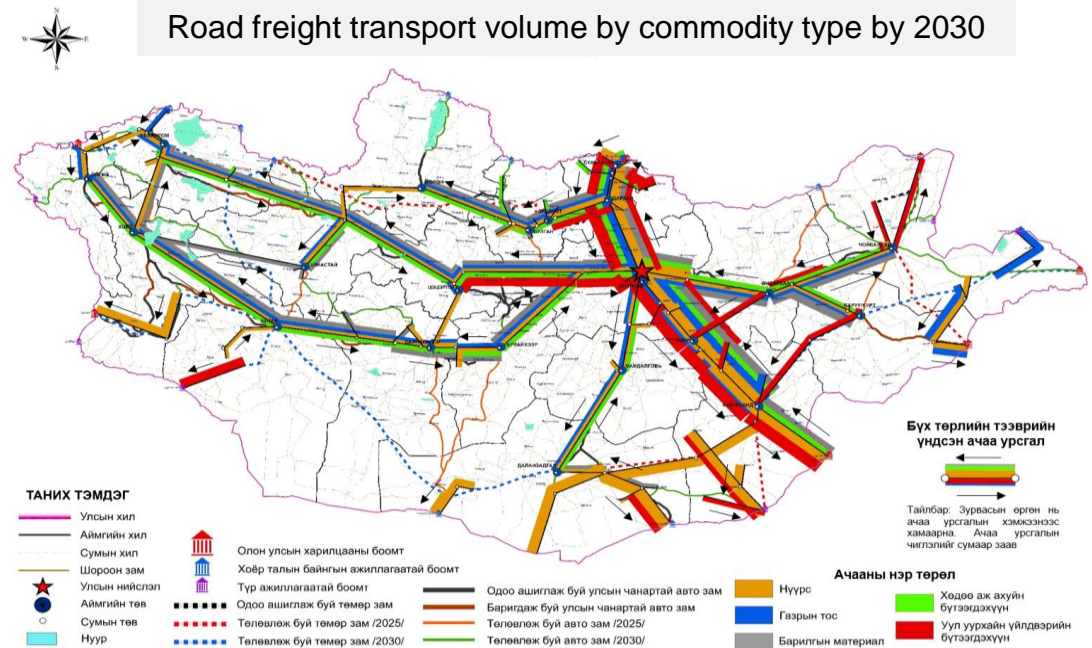
Countries entered into road transport agreements

1. Kazakhstan
2. Ukraine
3. Russia
4. Democratic People's Republic of Korea
5. Turkey
6. Belarus
9. China
10. Hungary
11. Latvia
12. Kyrgyzstan
13. Latvia
14. Poland
15. Lithuania

We are planning to establish bilateral transport agreement with following countries:

1. Germany
2. Georgia
3. Czech
4. Slovak
5. Italy
6. Bulgaria
7. Austria
8. Franz
9. Romania
10. Serbia
11. Croatia
12. Moldova
13. Uzbekistan
14. Iran

TIR - carries out transportation with 14 countries



# CURRENT SITUATION THE CAPACITY OF BORDER PORTS

Status of 2020

**Total border ports: 46**



**39 auto ports**



**3 railway ports**



**4 airports**

Of which:  
**Inactive – 19 ports**

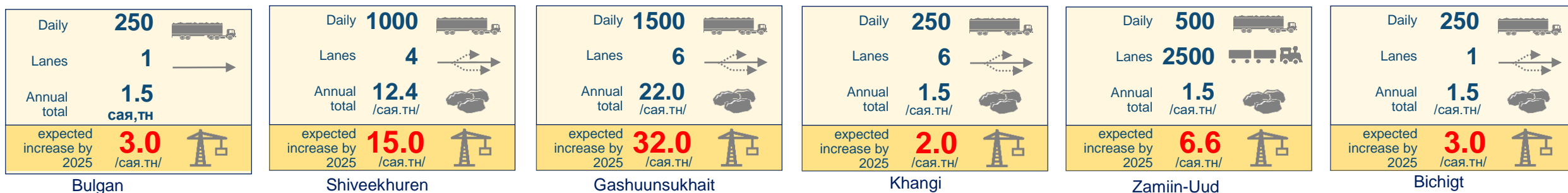
**29** border ports with Russia



**13** border ports with China

# PORT EXPANSION PROJECTS

Current status of border transport and further planning:



Cross-Border expansion projects:

Zamiin-uud	Altanbulag	Bichigt	Ganshuunsukhait	Shiveekhuren	Khangji	Bulgan
Dry port	International Logistics Center	Loading and unloading terminal	Loading and unloading terminal	Loading and unloading terminal		Loading and unloading terminal
New technology		AGV	Transshipment terminal /rail and Road/	AGV	Transshipment terminal /rail and Road/	
			AGV	Transshipment terminal /rail and Road/	AGV	

# KHOVD – WESTERN CORRIDOR



By establishing a dry port in Khovd, Russia, China, and the Republic of Kazakhstan can be connected to the transnational transport infrastructure network and develop into a regional transport and logistics hub.



# BICHIGT – EAST CORRIDOR

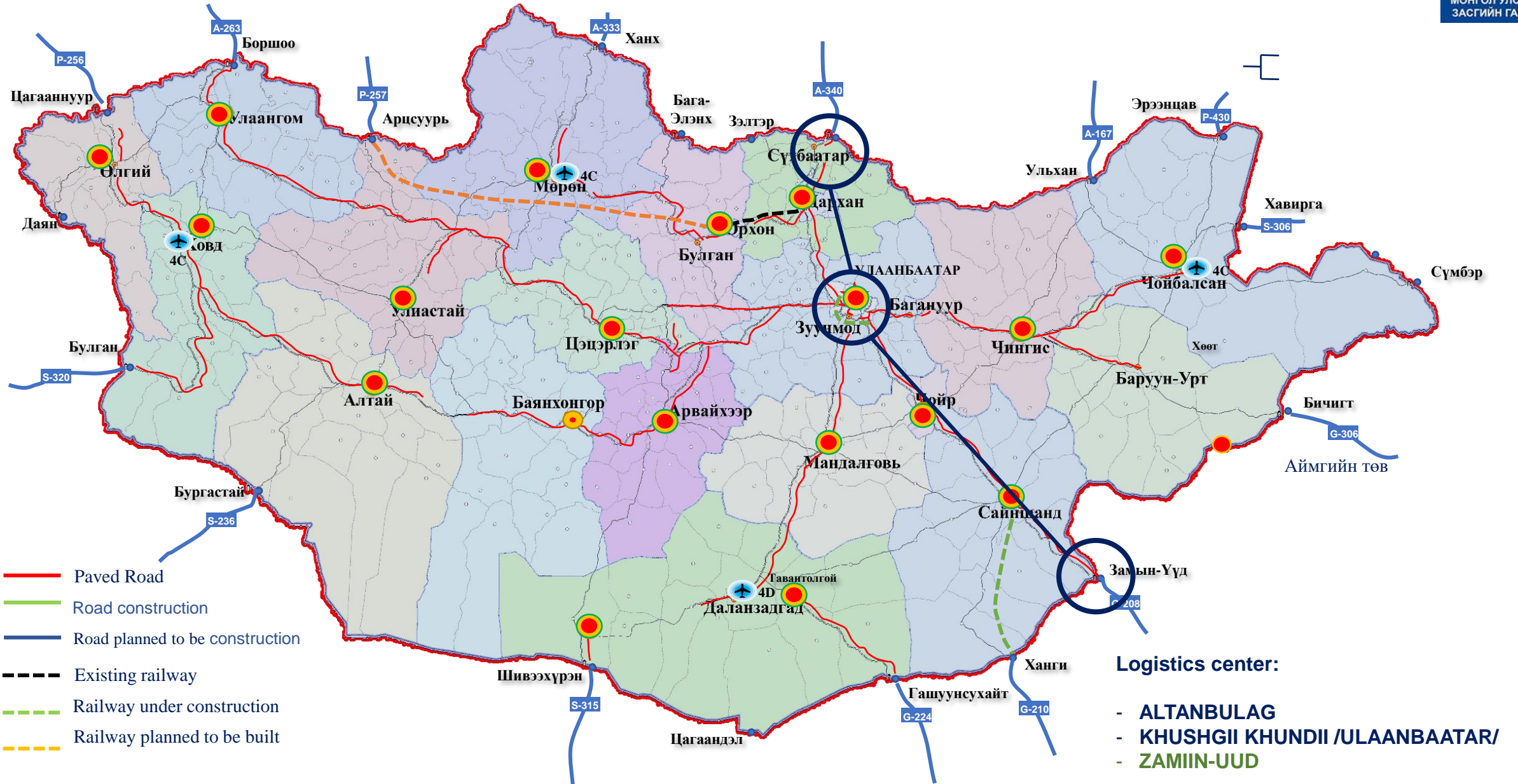


- ✓ The shortest passage to the sea in Mongolia. Jinzhou Port, China From the Chinese side, infrastructure, road communication, logistics, and port city construction have been done.
- ✓ The list of 32 projects to be implemented as part of the Mongolia-Russia-China Economic Corridor program includes the Eastern Corridor, or the Ereentsav-Choibalsan-Hüot-Bichigt railway.





# INTERNATIONAL LOGISTICS CENTERS



# “INTERGOVERNMENTAL AGREEMENT ON DRY PORTS” INTERNATIONAL DRY PORT DEVELOPMENT LOCATION /PROJECTS TO BE IMPLEMENTED FIRST INSTANCE/

## “TUUSHIN” JSC

UB TRANSPORTATION LOGISTIC CENTER CAN BE A DRY PORT “ PROJECT

- 34 km to the southeast of UB city
- Area **130-hectare** 1500 x 860м



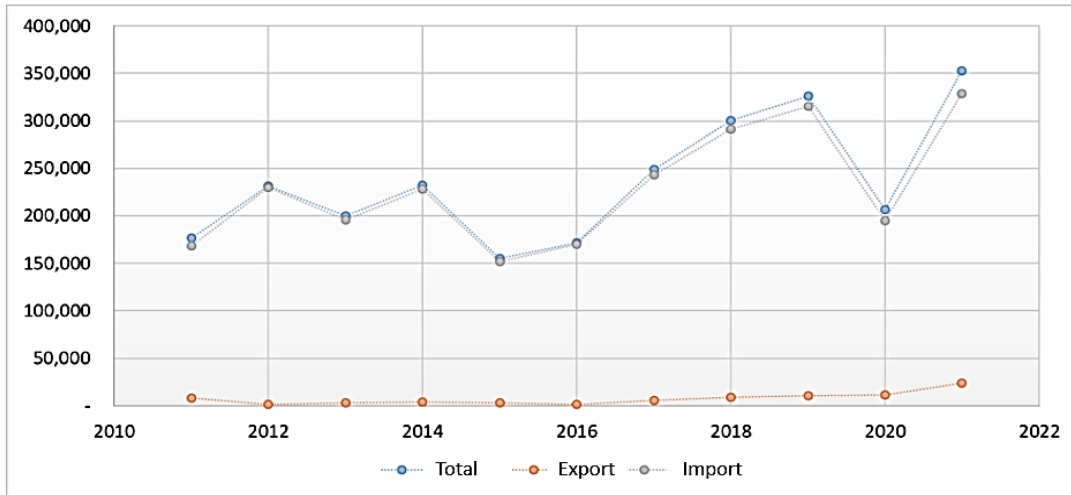
## “MONGOLIAN RAILWAY ” JSC

THE ZAMIIN-UUD LOGISTIC CENTER CAN BE SOUTHERN DRY PORT

709 km to the southeast of UB city  
Area **128+ hectare**



## Freight statistics



2.5 million tons of export and import goods are transported through Altanbulag border port annually, and 52% of Mongolia's import goods enter through this port.



At Altanbulag border crossing:

- export – 10 %
- import – 90 %

Altanbulag free zone:

- Import, export – 10%

# KHUSHIG VALLEY INTERNATIONAL LOGISTICS CENTER

## LOGISTICS CENTER PLANNING VERSION

Develop as an international logistics center

Development in combination with a dry port

Railway Logistics Center

Road transport logistics center

Dry port /railway/

Railway Logistics Center

Road transport logistics center

EVALUATION:

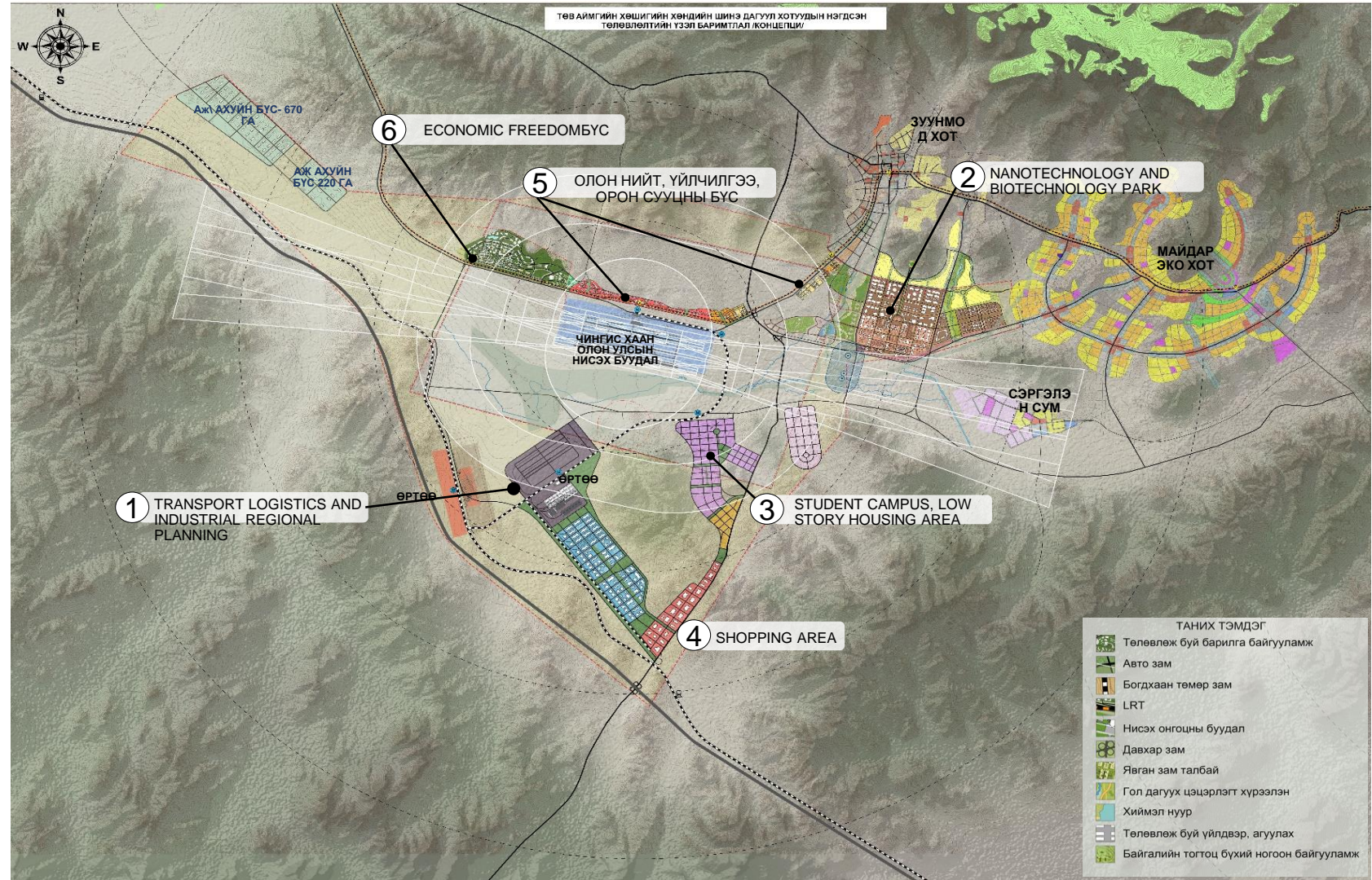
Design for low capacity

Design for high performance

FREIGHT ROTATION:

Annual cargo turnover is 15 million tons

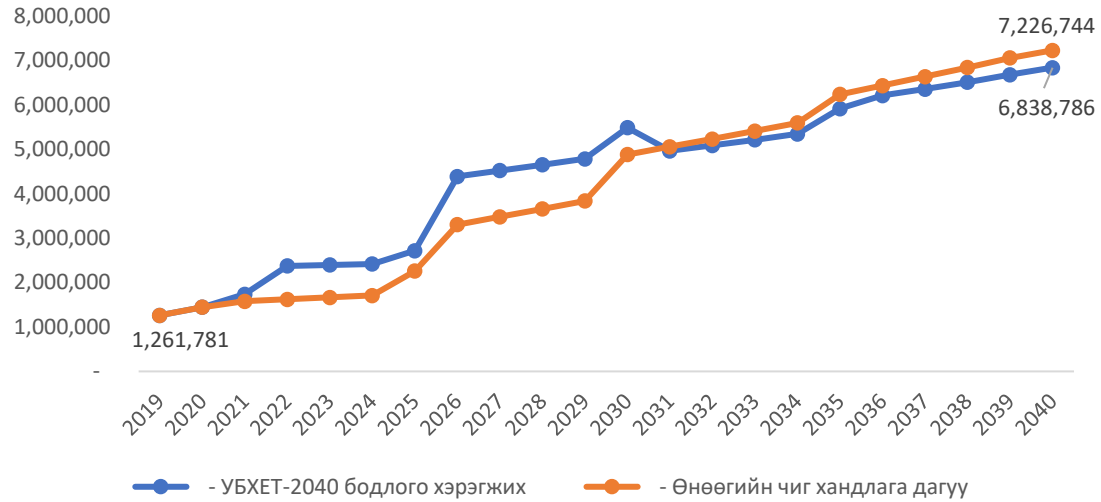
Annual cargo turnover is 25 million tons



GENERAL PLANNING IS DONE FOR 400 HA AREA

# VARIABLE CALCULATION OF LOGISTICS CENTER CARGO, TN

## Calculation of logistics center freight version, etc

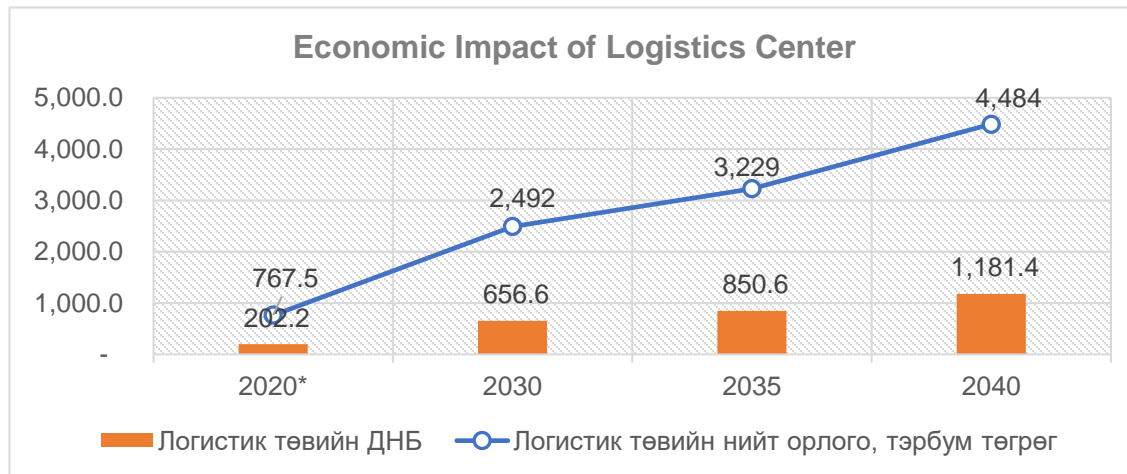


cargo turnover:

2020 / 2040 year

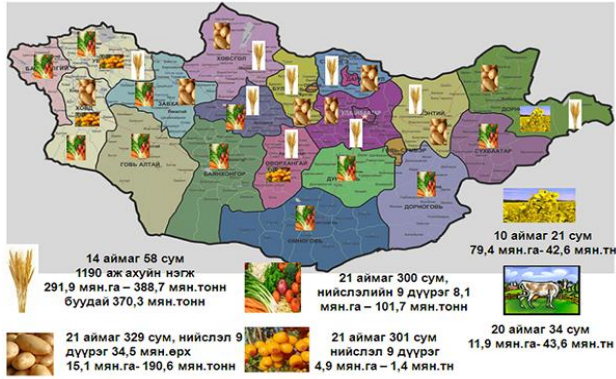
- Non-mining: 1.2 million.tn / 4.2 million.tn
- Mining 0.2 million.tn / 2.0 million.tn
- Total cargo turnover: 1.4 million.tn / 6.8 million.tn

## Economic Impact of Logistics Center



- The production of the transport sector will increase by 3.7 trillion
- The processing load will increase by 2.8 times
- The added value will increase 6 times and reach 1.2 thousand

# NEW KHARKHORIN CITY INTERNATIONAL LOGISTICS CENTER



THE LAND IS CULTIVATED

AGRICULTURE

**INTERNATIONAL LOGISTICS CENTER**  
/25 million+ tons of cargo turnover per year/

LOGISTICS CENTER PLANNING VERSION

Domestic rail freight

Postage

Railway /highway/

Air transport /4E/

Road transport / international cargo transport /

## WESTERN REGION



**23.6%**  
Population

**17%**  
GDP

**6.8%**  
Production

**9.4%**  
Mining and mining license

**22.8%**  
Animal husbandry

**8.6%**  
Agriculture and farming

## CENTER REGION



**34.2%**  
Population

**38%**  
GDP

**34.4%**  
Production

**14.1%**  
Mining and mining license

**24.2%**  
Animal husbandry

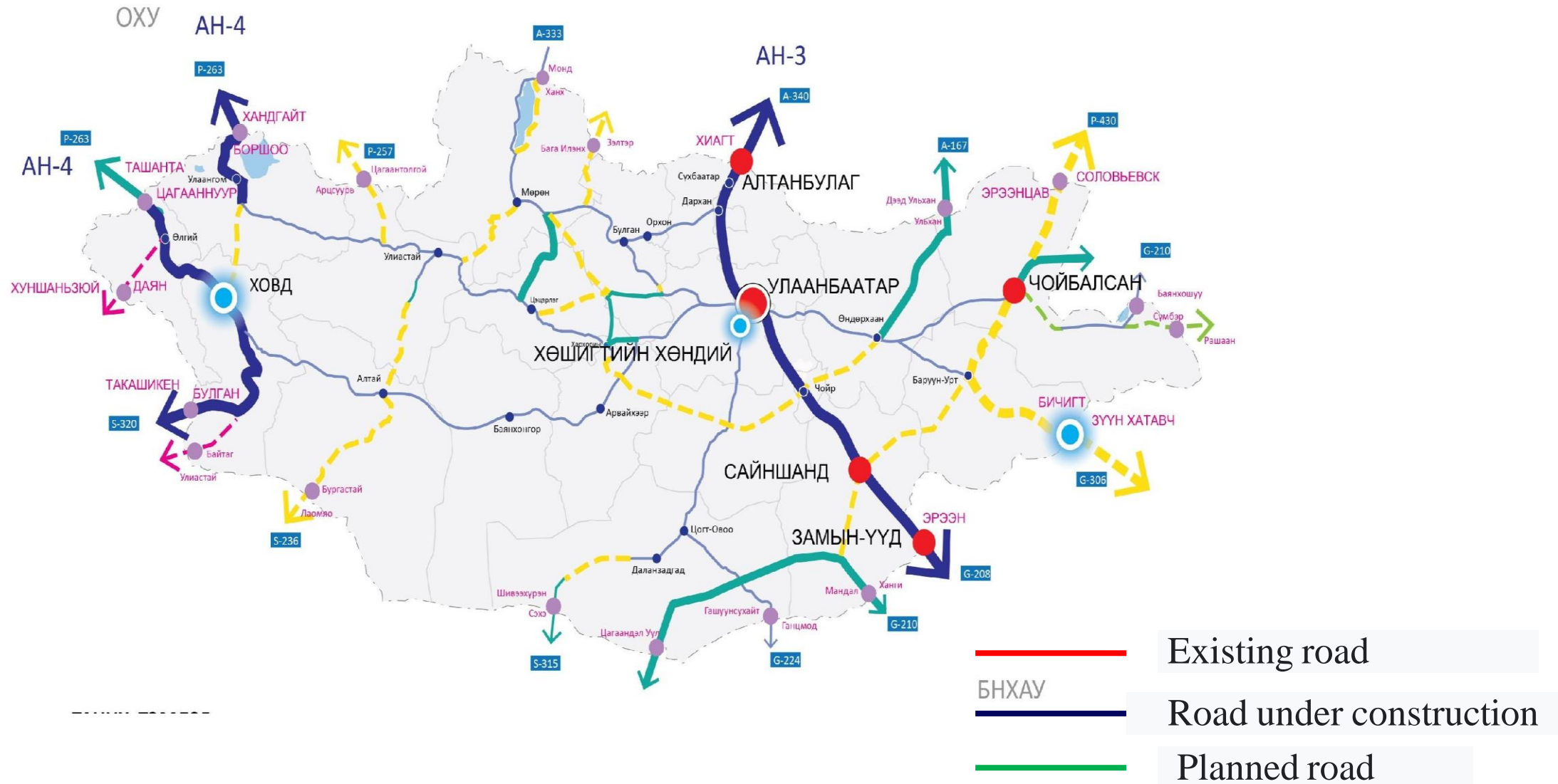
**23.1%**  
Agriculture and farming

# "TRANSPORT - LOGISTICS CENTER" PROJECT IN TIANJIN PORT



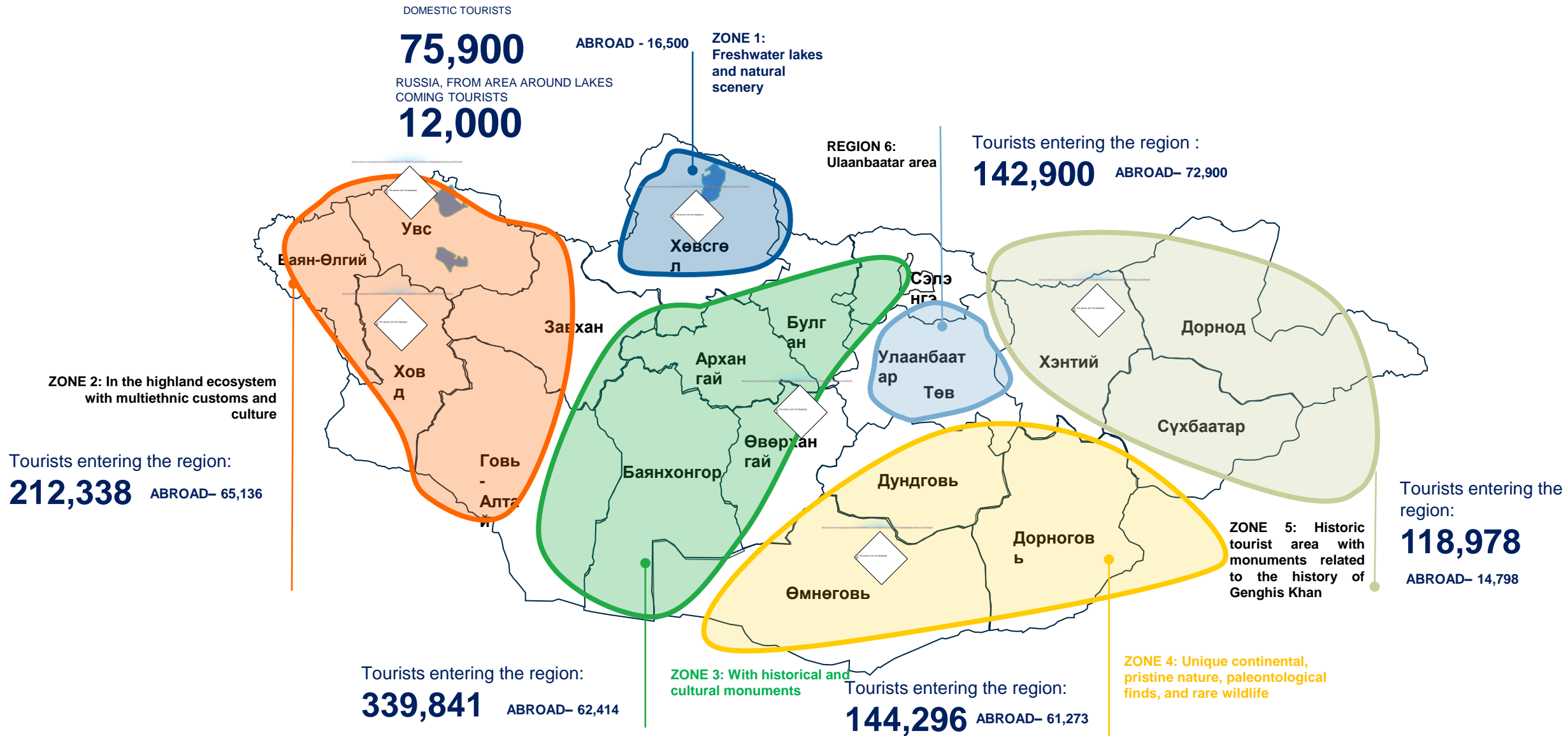
Basis for project implementation	<p>Memorandum of Understanding between the Ministry of Roads, Transport, Construction and Urban Development of Mongolia and the People's Government House of Tianjin, China, "On the Deep Development of Economic and Trade Cooperation",</p> <p>Resolution No. 152 of 2013 of the Government of Mongolia "About some measures to be taken to increase access to the sea"</p>
Implementation period	<p>As part of the 2009 memorandum on deepening economic and trade cooperation between Mongolia and China, it was agreed to co-own 10 hectares of land in Binhai District of Tianjin, China for a period of 50 years with the Chinese side. (2016-2066)</p>
Internal rate of return /IRR/	13,6%
Project progress	<p>The contract and statutes of the joint venture company were prepared in Chinese and Mongolian.</p> <p>The technical and economic basis /feasibility study/ was prepared in May 2014 by "Tianjin Building Design Institute".</p>

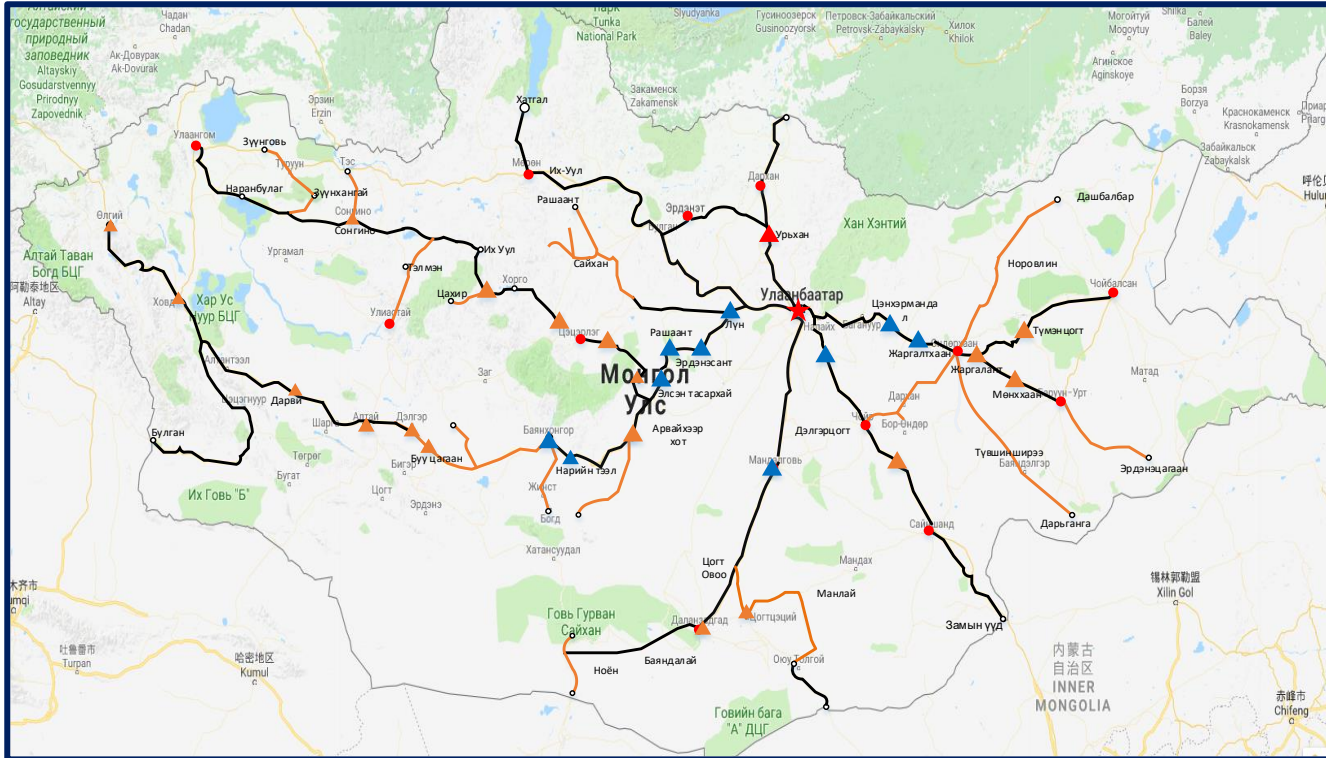
# NATIONAL ROAD CONNECTIVITY AND DRY PORTS LOCATION





# STATUS OF DOMESTIC TOURISM





We are planning to start the construction of a road side amenity centers that meets the standard requirements at a total of 34 locations every 170-250 km along the highways of the main tourist routes.

**Constructions finished - 5**

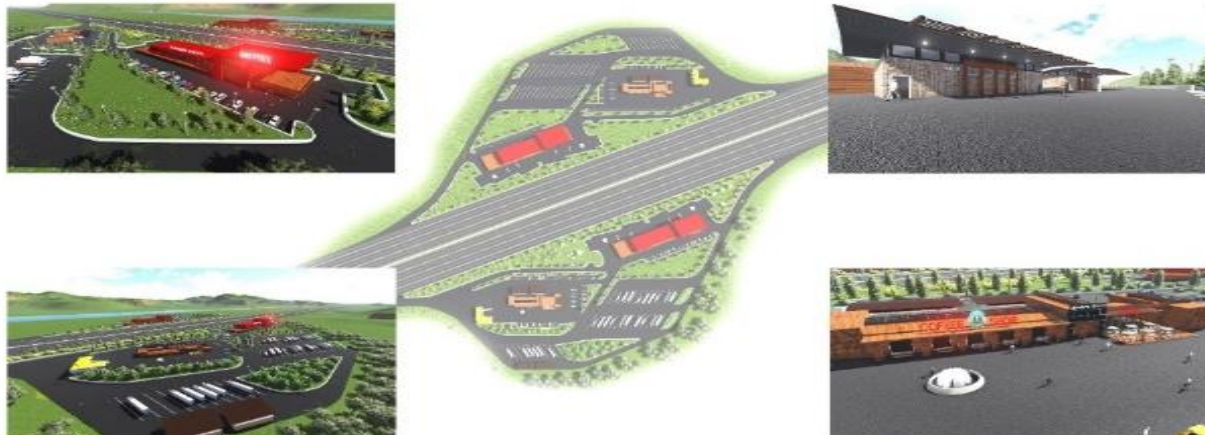
**Contracts signed - 21**

**Announced a call to submit proposals - 8**

**FURTHER**, in order to coordinate with the operation of the toll booths, the selection process is announced for 5 additional locations.

## Location to be announced

- 1.Uvs, Naranbulag
- 2.Khovd, Bulgan border
- 3.Umnugovi, Khatgal
- 4.Sukhbaatar, Erdenetsagaan
- 5.Dornod



# PROVINCIAL BUS TERMINALS

Passenger traffic of the BULGAN route:



2<sup>nd</sup> class bus terminal

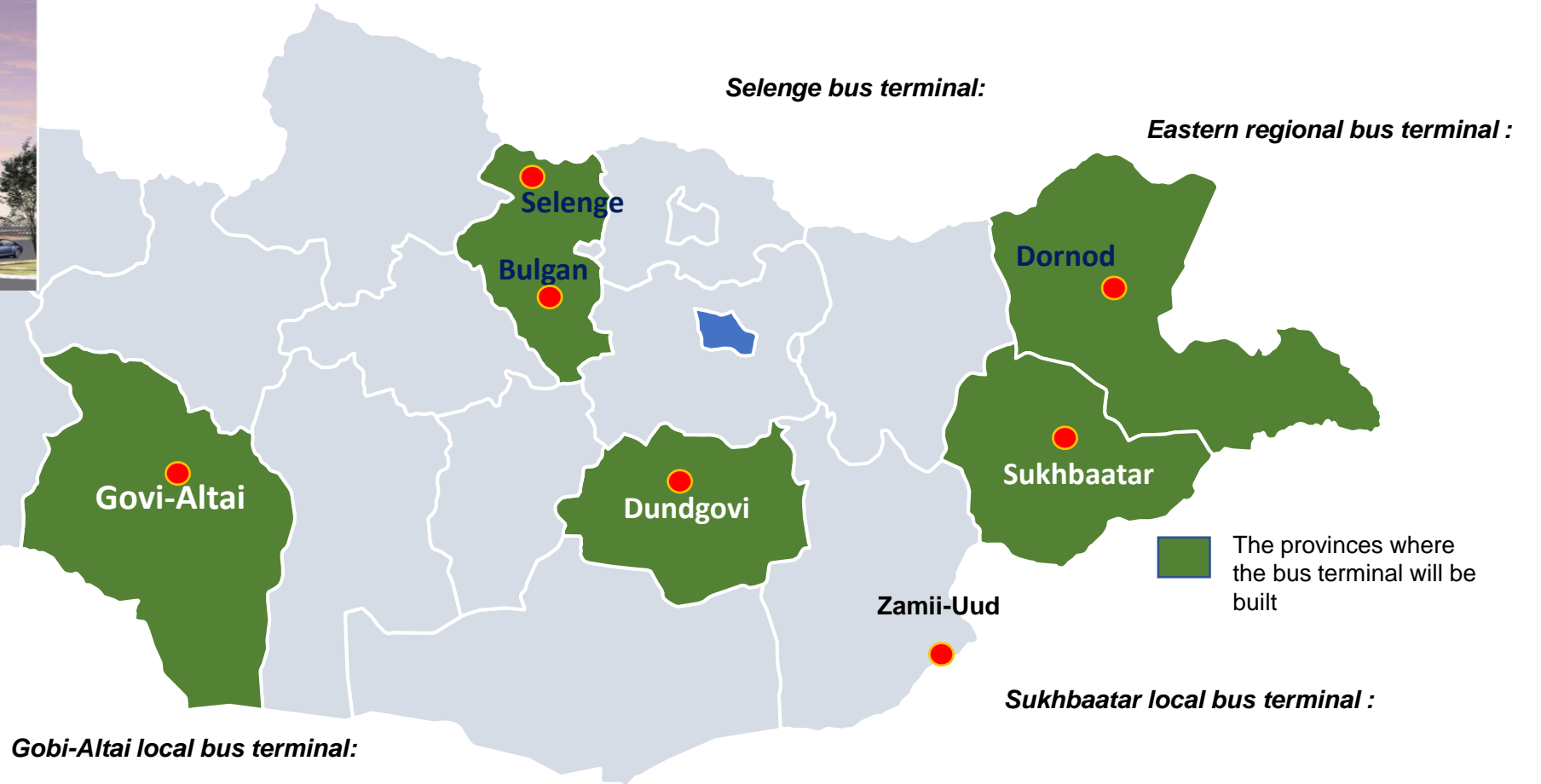
✓The average number of daily passenger traffic (calculated for the given year) ranges from 1,000 to 3,000 people.

✓The maximum number of passengers served per hour is 200-600 people

✓The total area of the bus station is more than 200 m<sup>2</sup>

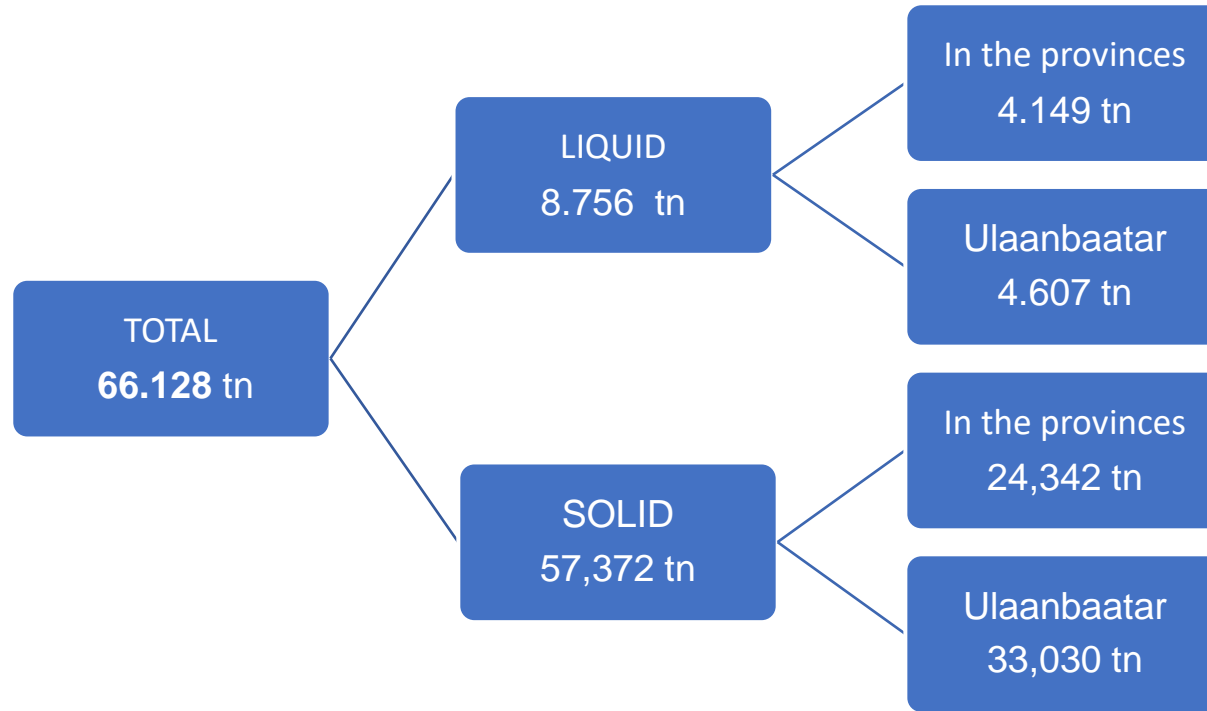
✓Common area is more than 300 m<sup>2</sup>

✓The area of the service bus should be more than 960 m<sup>2</sup>



In total in 6 provinces

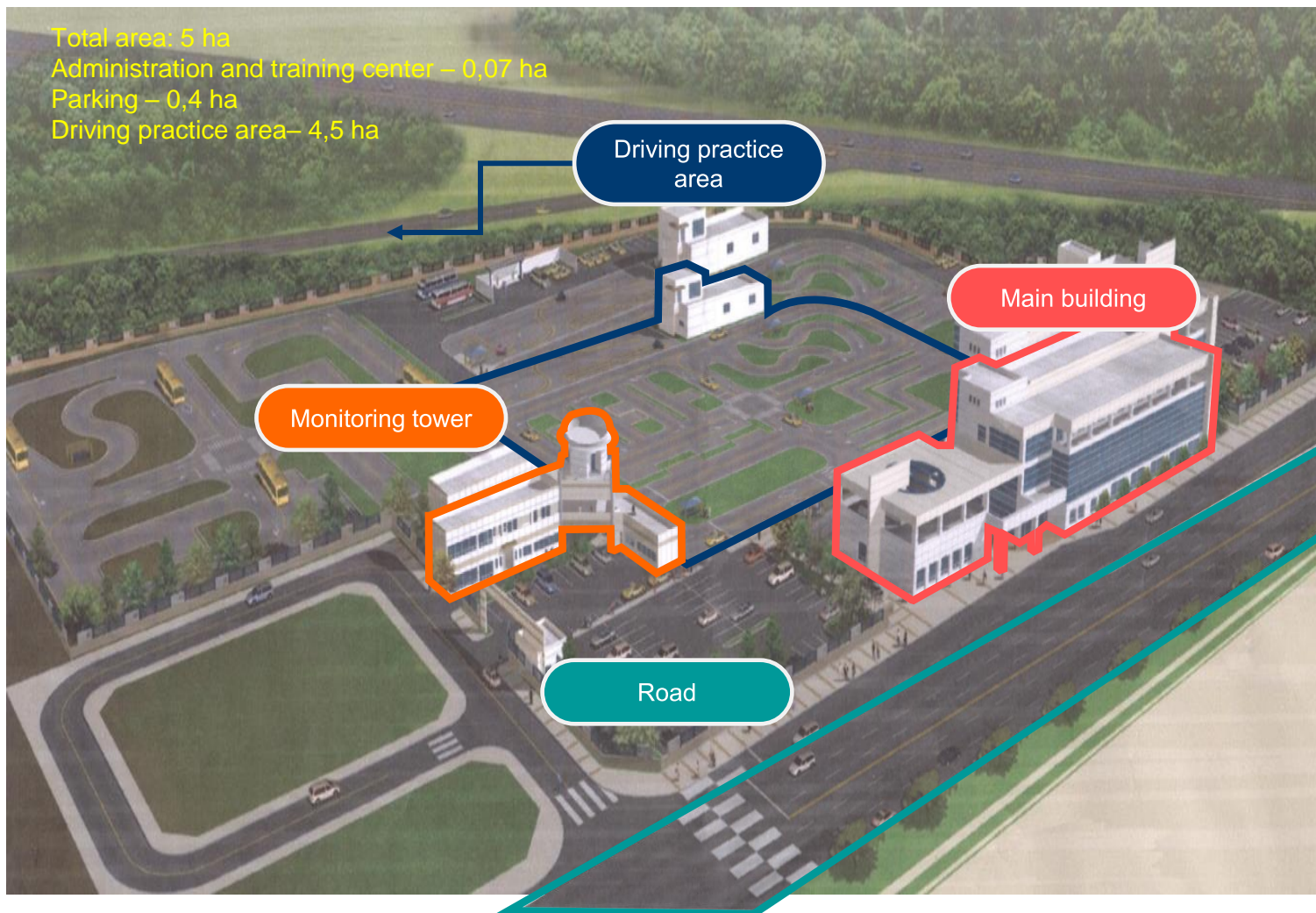
# VEHICLE RECYCLING PLANT ESTABLISHMENT PROJECTS



- Establishment of collection, storage, transportation, and separation points for waste generated from decommissioned vehicles and technical services in 21 provinces and capital city within the framework of public-private partnership /PPP/.
- Establishment of laboratories and recycling plants for testing some parts.

No	Factory location	Explanation	Investment / billion/
1	Ulaanbaatar, Nalaih, Baganuur District	Establish and operate	70.0
2	Umnugovi, Orkhon, Darkhan-Uul provinces	Establish and operate	30.0

# "INTEGRATED CENTER FOR EXAMINATION AND PRACTICE OF QUALIFIED DRIVERS"



- The training, examination and practice halls are equipped with touchscreen computers and technical equipment.
- Surveillance cameras are installed in the examination area to monitor the vehicles being tested.
- To ensure the safety of fully equipped vehicles, they are monitored with the assistance of cameras installed in each vehicle.
- The central research and testing laboratory conducts research and analysis on vehicle safety, environmental sustainability, the effectiveness of safety systems when accidents occur, and other related services in the transportation sector.



ЗАМ, ТЭЭВРИЙН  
ХӨГЖЛИЙН ЯАМ

***Thank you for your attention***